



Project References

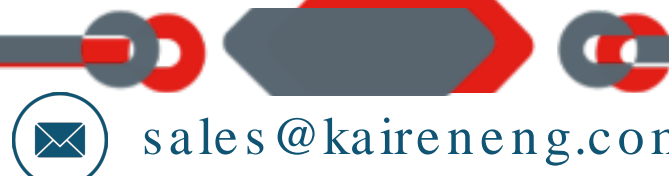
Project References

- **Client** – Arvee Laboratories (India) Limited
- **Equipment** – Vacuum Receiver Vertical Vessel
- **Material** – SS 316
- **Size** – OD 1600 mm X 3000 mm Length X 6 mm thk
- **Location** – Bhavnagar
- **Qty.** – 3 Nos.
- **Scope** – Design, Fabrication, Testing and Supply



Project References

- **Client** – Arvind Envisol Limited
- **Equipment** – MS Pressure Vessel with Platform
- **Material** – MS
- **Size** – 2016 mm OD x 3570 mm H
- **Location** – Ahmedabad
- **Qty.** – 1 No.
- **Scope** – Fabrication, Testing, Paint and Supply



Project References

- **Client** – ROSA POWER SUPPLY CO LTD [RELIANCE POWER LTD]
- **Equipment** – MS Tank
- **Material** – MS
- **Size** – 1600 mm OD x 1600 mm H
- **Location** – Shahjahanpur (UP)
- **Qty.** – 2 No.
- **Scope** – Design, Fabrication, Testing, and Supply



Project References

- **Client** – Neocent Engineering Pvt Ltd
- **Equipment** – Desander Cyclone
- **Material** – Carbon Steel
- **Qty.** – 2 No.
- **Scope** – Design, Fabrication, Testing, and Supply



Project References

- **Client** – Neocent Engineering Pvt Ltd
- **Equipment** – Modular Vessels
- **Material** – SS 316
- **Qty.** – 1 No.
- **Scope** – Design, Fabrication, Testing, and Supply



Project References

- **Client** – Rochelles Technomatics India Pvt. Ltd
- **Equipment** – Vacuum Vessels
- **Material** – MS
- **Qty.** – 1 No.
- **Scope** – Design, Fabrication, Testing, and Supply



Project References

- **Client** – Sunflag Iron & Steel Co. Ltd.
- **Equipment** – Water Accumulator
- **Material** – SA 387 Gr. 11, Class 2, 36 mm
- **Pressure** – 380 Bar
- **Qty.** – 1 No.
- **Scope** – Design, Fabrication, Testing, and Supply



Manufacturing in Progress



+91 9106 614 958



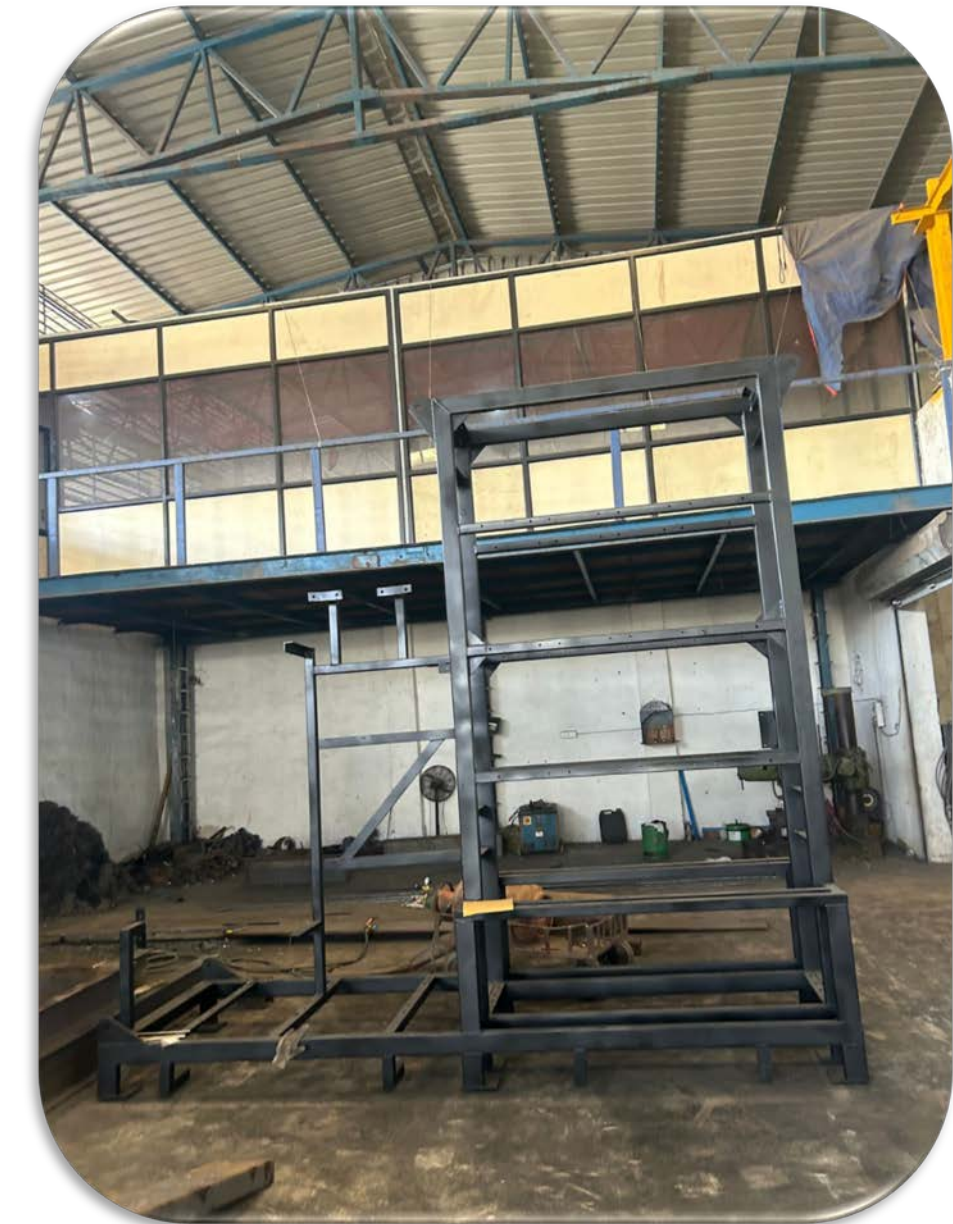
sales@kaireneng.com



www.kaireneng.com

Project References

- **Client** – Arvind Envisol Limited
- **Equipment** – MS Structure
- **Material** – MS
- **Size** – As per the drawing
- **Location** – Ahmedabad
- **Qty.** – 15 Ton
- **Scope** – Fabrication, Testing, Paint and Supply



Project References

- **Client** – Rajshree Fine Chemical Industries India Pvt Ltd
- **Equipment** – Gland Steam Condenser
- **Material** – MSEP
- **Size** – 5 m²
- **Location** – UP
- **Qty.** – 1 No.
- **Scope** – Design, Fabrication, Testing, Paint and Supply



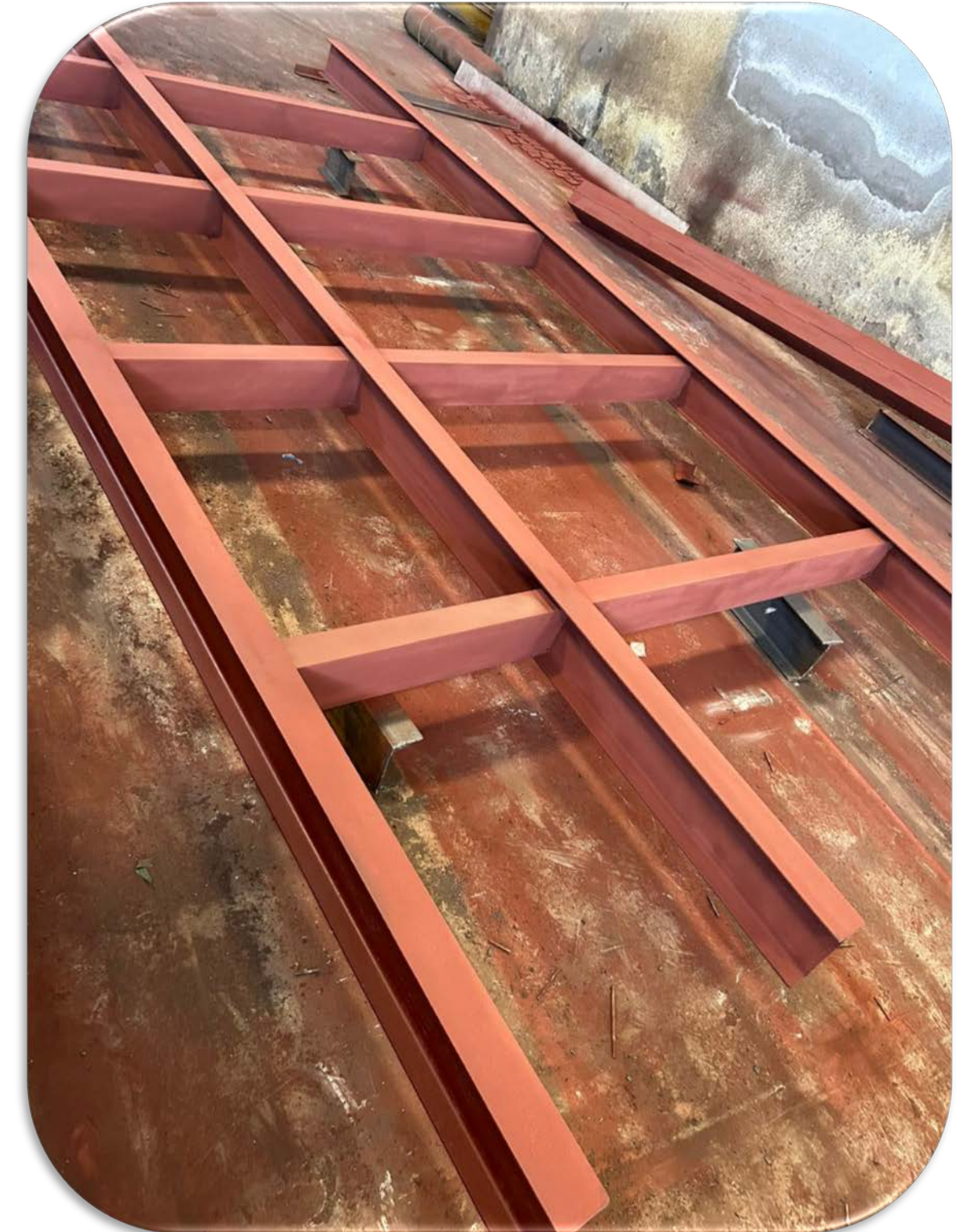
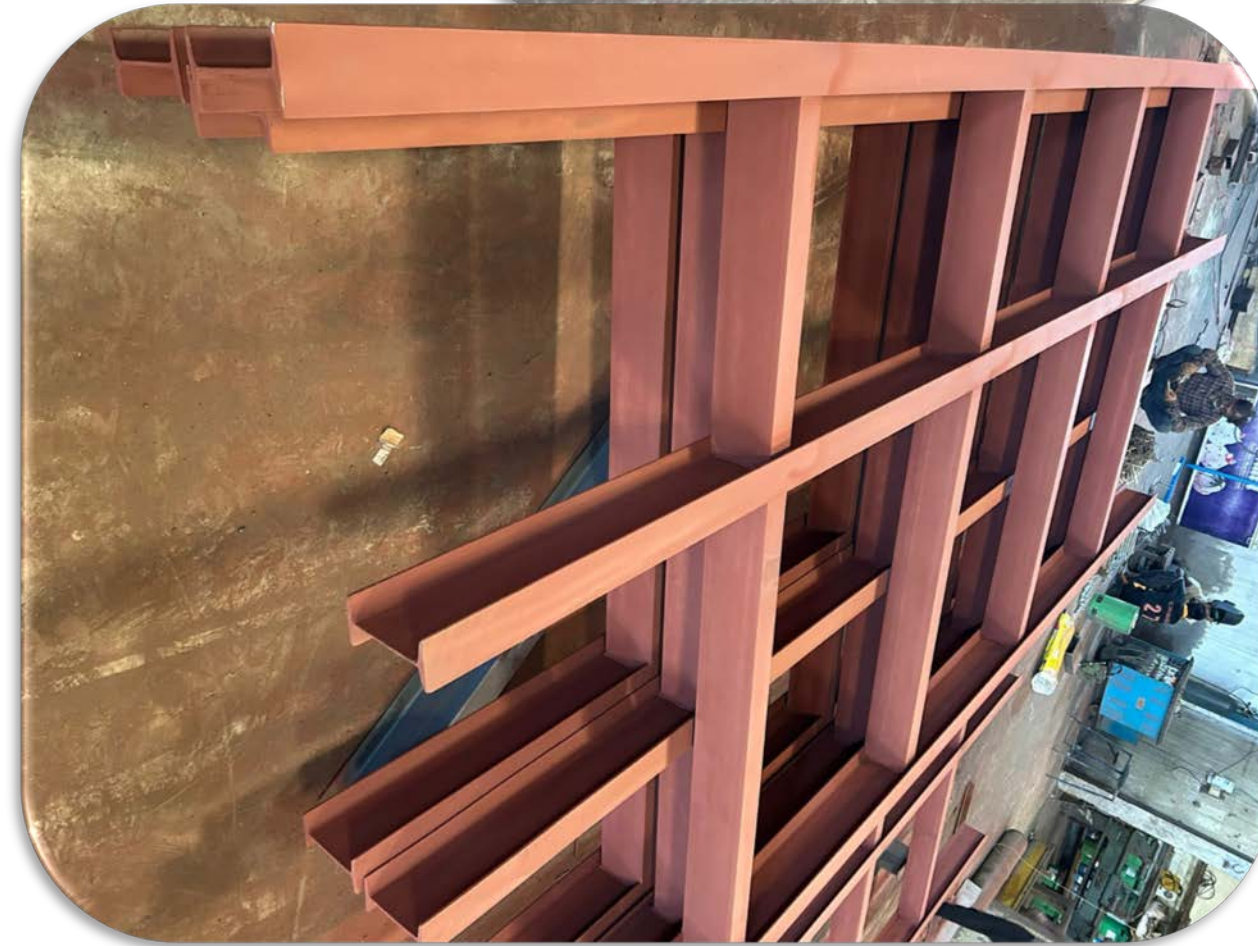
Project References

- **Client** – Urbanaac Infrastructure Pvt. Ltd.
- **Equipment** – I Beam
- **Material** – MS, E 350
- **Size** – 22 meter long
- **Location** – Ahmedabad
- **Qty.** – 2 Nos., Total 60 Ton
- **Scope** – Fabrication, Testing, Supply , Erection



Project References

- **Client** – Advent Envirocare Technology Pvt. Ltd.
- **Equipment** – MS Structure
- **Material** – MS
- **Size** – As per the drawing
- **Location** – Valsad (Atul)
- **Qty.** – 6.5 Ton
- **Scope** – Fabrication, Testing, Paint and Supply



Project References

- **Client** – Dudhsagar Dairy
- **Equipment** – Screw Conveyor
- **Material** – MSEP
- **Size** – 200 NB x 3000 mm L
- **Location** – Mehsana
- **Qty.** – 10 Nos.
- **Scope** – Design, Fabrication, Testing, Paint and Supply



Project References

- **Client** – Advent Envirocare Technology Pvt. Ltd.
- **Equipment** – SS Clamp for ETP & STP plant
- **Material** – SS,MS
- **Size** – As per the drawing
- **Location** – Valsad (Atul)
- **Qty.** – 1 Lot.
- **Scope** – Design, Fabrication, Testing, Paint and Supply



Project References

- **Client** – Sabar Dairy
- **Equipment** – Spiral Conveyor
- **Material** – SS 316
- **Size** – 2000 mm OD x 3500 mm H
- **Location** – Himatnagar
- **Qty.** – 1 No.
- **Scope** – Design, Fabrication, Testing, Paint and Supply

